

ARCADIA COUTURE

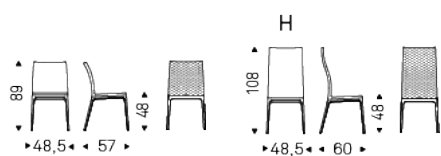


Product description

Chair with frame in natural beech (F1), Canaletto walnut (FNC), wenghè (FW), matt white (OP7) or black (OP17) stained beech. Cover in synthetic leather or soft leather as per sample card. Quilted seatback cover. The cover is not removable.

ARCADIA COUTURE

Dimension



ARCADIA COUTURE

Finishes: base

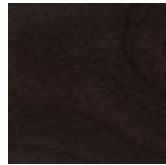
wood



F1 natural
stained beech



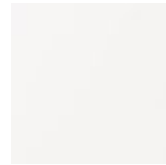
FNC walnut
canaletto
stained beech



FW dark wenghè
stained beech



OP17 matt black



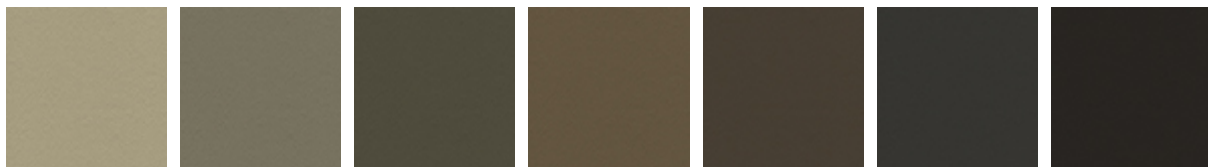
OP7 matt white

Finishes: seat

soft leather



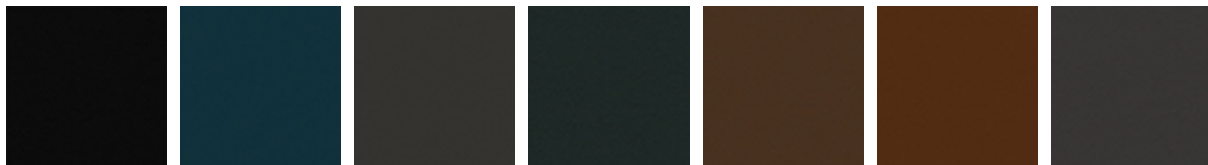
891 TESTA DI MORO 940 NAVY 942 FANGO 943 MOKA 944 BORDEAUX 945 SAFARI 946 MARRONE



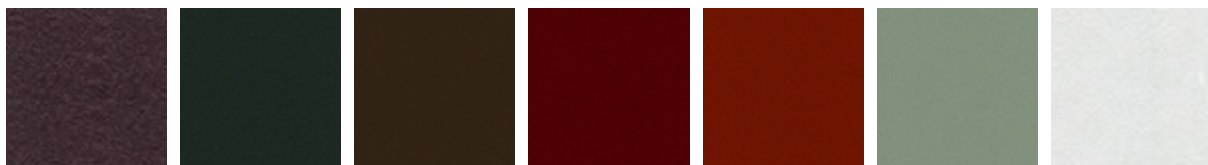
947 OYSTER 948 LINO 949 CENERE 950 TORTORA 951 CASTORO 952 SMOKE 953 ARDESIA



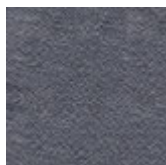
955 MORA 956 ATLANTICO 959 ICE 960 BRUNO 961 LATTE 967 AVORIO 971 BIANCO



973 NERO 974 CAPRI 977 PIOMBO 980 OTTANIO 981 BISCOTTO 982 COGNAC 983 ARGILLA



984 BRONZO 987 SHERWOOD 988 TABACCO 989 ROSSO CORSA 992 LOBSTER 993 ARTICO PL71 BIANCO PERLATO LUCIDO



PL73 NERO PERLATO LUCIDO

synthetic leather



ECP01 BIANCO ECP03 PANNA ECP04 BEIGE ECP05 TORTORA ECP07 MARRONE ECP08 MOKA ECP12 ARANCIO



ECP13 ROSSO CORSA ECP14 BORDEAUX ECP17 VERDE ECP18 OLIVA ECP20 CIELO ECP21 OCEAN ECP23 LONDON



ECP24 NERO ECP25 CANAPA ECP26 FANGO ECP29 CEDRO ECP33 MORA ECP36 CEMENTO ECP37 ARDESIA



ECP48 LINO ECP83 ARGILLA

