

ASTON TV

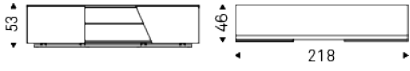


Product description

TV cabinet in titanium (GF11) or black (GF73) embossed lacquered wood. Titanium (GFM11) or black (GFM73) embossed steel base. Left door covered and quilted in synthetic leather or soft leather as per sample card with titanium (GFM11) embossed aluminum profiles. Right door in Canaletto walnut (NC), burned oak (RB) or Brushed Bronze with black chrome (06) details. Internal fumé glass shelves.

ASTON TV

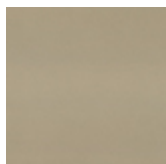
Dimension



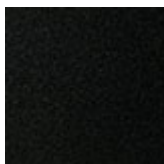
ASTON TV

Finishes: frame

wood



GF11 titanium
embossed



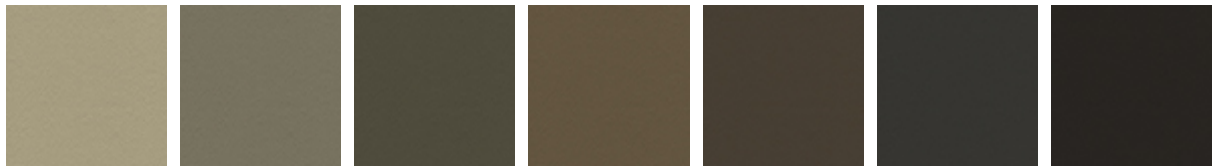
GF73 embossed
black

Finishes: 1 door

soft leather



891 TESTA DI MORO 940 NAVY 942 FANGO 943 MOKA 944 BORDEAUX 945 SAFARI 946 MARRONE



947 OYSTER 948 LINO 949 CENERE 950 TORTORA 951 CASTORO 952 SMOKE 953 ARDESIA



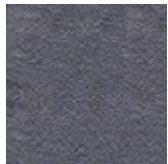
955 MORA 956 ATLANTICO 959 ICE 960 BRUNO 961 LATTE 967 AVORIO 971 BIANCO



973 NERO 974 CAPRI 977 PIOMBO 980 OTTANIO 981 BISCOTTO 982 COGNAC 983 ARGILLA



984 BRONZO 987 SHERWOOD 988 TABACCO 989 ROSSO CORSA 992 LOBSTER 993 ARTICO PL71 BIANCO PERLATO LUCIDO



PL73 NERO PERLATO LUCIDO

wood



brushed bronze NC walnut canaletto RB burned oak

synthetic leather



ECP01 BIANCO ECP03 PANNA ECP04 BEIGE ECP05 TORTORA ECP07 MARRONE ECP08 MOKA ECP12 ARANCIO



ECP13 ROSSO CORSA ECP14 BORDEAUX ECP17 VERDE ECP18 OLIVA ECP20 CIELO ECP21 OCEAN ECP23 LONDON



ECP24 NERO ECP25 CANAPA ECP26 FANGO ECP29 CEDRO ECP33 MORA ECP36 CEMENTO ECP37 ARDESIA



ECP48 LINO ECP83 ARGILLA

