
Eris

Massimo Castagna
2017



Eris

Massimo Castagna , 2017

Lampada a sospensione a LED con struttura verniciata nero bronzato e fasce in ottone lucido, satinato, brunito a mano e cromo nero. Luce dimmerabile.

Hanging lamp with LED light with black bronzed painted structure and bright, satin, hand-burnished brass and black chrome parts.

Dimensioni / Sizes

Cm (Ø x H)

35 x 180

35 x 210

35 x 250

35 x 280

35 x 320

Inches (Ø x H)

14" x 71"

14" x 82¾"

14" x 98½"

14" x 110¼"

14" x 126"



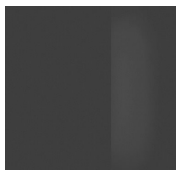




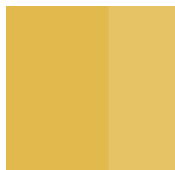
Eris

Finiture / Finishes

Metallo / Metal



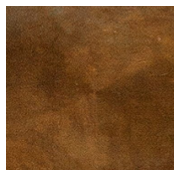
Cromo nero
Black chrome



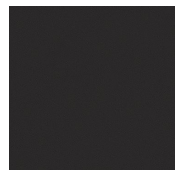
Ottone lucido
Bright brass



Ottone satinato
Satin brass



Ottone brunito
a mano
Hand
burnished
brass



Nero bronzato
Bronzed black
