

COCOON KERAMIK



Product description

Desk with base in titanium (GFM11), bronze (GFM18) or black (GFM73) embossed lacquered steel. Top in ceramic Marmi Alabastro (KM02), Ardesia (KM04), matt Golden Calacatta (KM05), glossy Golden Calacatta (KM06), matt Portoro (KM07), glossy Portoro (KM08), glossy Sahara Noir (KM09), Emperador (KM10), Makalu (KM11), Breccia (KM12), Arenal (KM13) or Zefiro (KZ20) with Brushed Bronze or Brushed Grey lacquered and rounded lower profile and grooved tray in Brushed Bronze or Brushed Grey lacquered steel.

COCOON KERAMIK

Design: Paolo Cattelan

Dimension



COCOON KERAMIK

Finishes: top

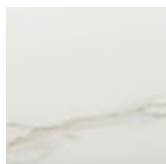
Marmi ceramic



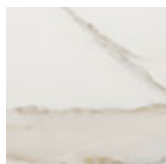
KM02 Alabastro



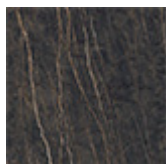
KM04 Ardesia



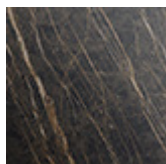
KM05 matt
Golden Calacatta



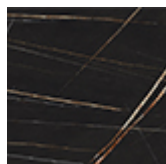
KM06 glossy
Golden Calacatta



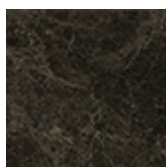
KM07 matt
Portoro



KM08 glossy
Portoro



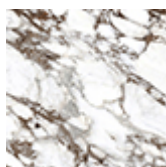
KM09 glossy
Sahara Noir



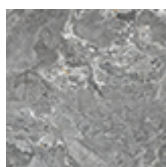
KM10 Emperador



KM11 Makalu

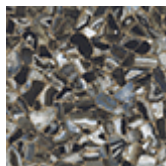


KM12 Breccia



KM13 Arenal

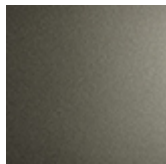
KZ ceramic



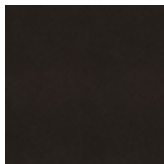
KZ20 Zefiro

Finishes: frame

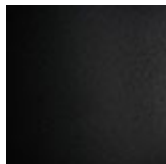
metal



GFM11 titanium
embossed



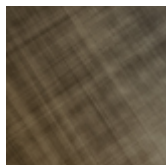
GFM18 bronze
embossed



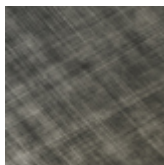
GFM73 black
embossed

Finishes: profile

wood



brushed bronze



brushed grey

