

MAYA FLEX ML

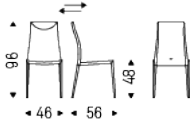


Product description

Chair with steel structure in chromed (08), black chrome (06), white (OP71), graphite (OP69), titanium (GFM11) or bronze (GFM18) finish. Cover in fabric, synthetic nubuck, micro nubuck, soft leather or synthetic leather as per sample card. The soft leather, synthetic nubuck, micro nubuck and synthetic leather covers are not removable. Flexible back rest.

MAYA FLEX ML

Dimension



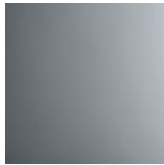
MAYA FLEX ML

Finishes: frame

metal



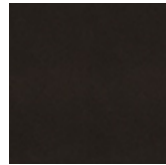
06 black chrome



08 chrome



GFM11 titanium
embossed



GFM18 bronze
embossed



OP69 matt
graphite



OP71 matt white

Finishes: seat

soft leather



891 TESTA DI MORO

940 NAVY

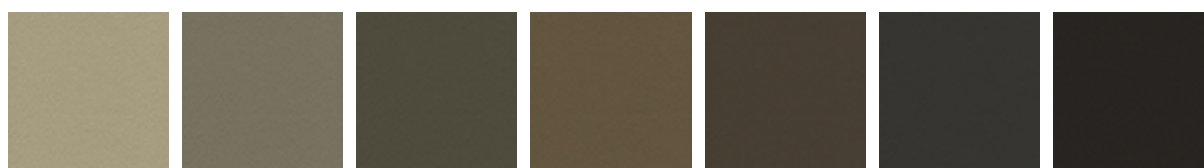
942 FANGO

943 MOKA

944 BORDEAUX

945 SAFARI

946 MARRONE



947 OYSTER

948 LINO

949 CENERE

950 TORTORA

951 CASTORO

952 SMOKE

953 ARDESIA



955 MORA

956 ATLANTICO

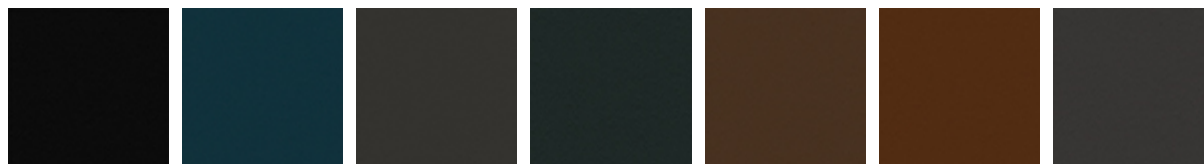
959 ICE

960 BRUNO

961 LATTE

967 AVORIO

971 BIANCO



973 NERO

974 CAPRI

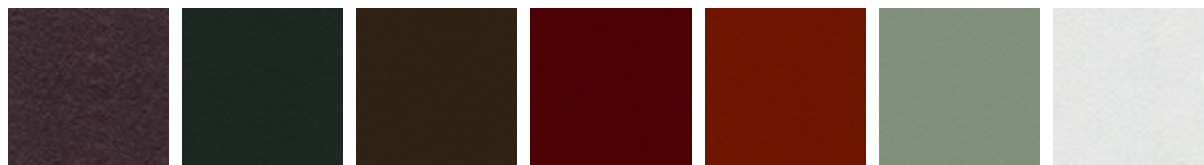
977 PIOMBO

980 OTTANIO

981 BISCOTTO

982 COGNAC

983 ARGILLA



984 BRONZO

987 SHERWOOD

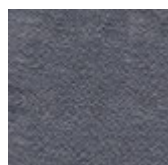
988 TABACCO

989 ROSSO CORSA

992 LOBSTER

993 ARTICO

PL71 BIANCO PERLATO LUCIDO



PL73 NERO PERLATO LUCIDO

fabric



synthetic leather



ECP01 BIANCO ECP03 PANNA ECP04 BEIGE ECP05 TORTORA ECP07 MARRONE ECP08 MOKA ECP12 ARANCIO



ECP13 ROSSO CORSA ECP14 BORDEAUX ECP17 VERDE ECP18 OLIVA ECP20 CIELO ECP21 OCEAN ECP23 LONDON

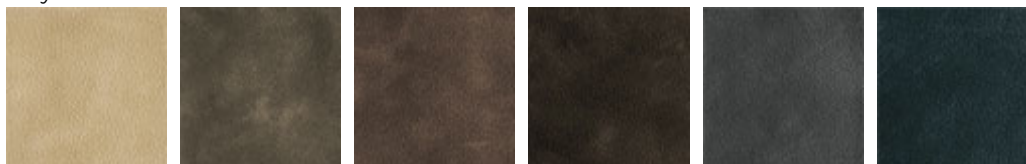


ECP24 NERO ECP25 CANAPA ECP26 FANGO ECP29 CEDRO ECP33 MORA ECP36 CEMENTO ECP37 ARDESIA



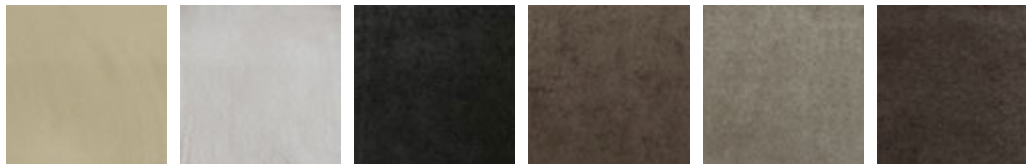
ECP48 LINO ECP83 ARGILLA

synthetic nubuck



SN01 ZENZERO SN03 ARGILLA SN04 TERRA SN05 VISIONE SN06 VULCANO SN17 NOTTE

micro nubuck



MN100 BEIGE MN103 WHITE MN200 INK MN603 COGNAC MN604 SHADOW MN609 MARRON

glove soft leather



GLV11 TAUPE GLV12 OLIVA GLV14 PLATOON GLV15 CARBON GLV16 CACAO GLV17 HORNET

