

# SCRIPT

TAVOLINO | COFFEE - SIDE TABLE



# SCRIPT 45

TAVOLINO | SIDE TABLE

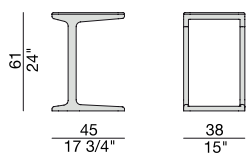
Tavolino con struttura in massello di frassino e piano in marmo.

Side table in solid ash and marble top.

Beistelltisch mit Gestell aus massiver Esche und Marmorplatte.

Guéridon avec structure en frêne massif et plateau en marbre.

Mesa auxiliar con estructura de fresno macizo y tapa de mármol.



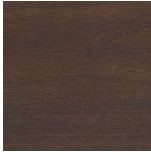
# SCRIPT 45

TAVOLINO | SIDE TABLE

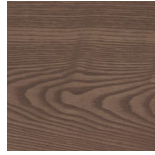
## Essenze | Wood



FRASSINO NATURALE  
Natural Ash



FRASSINO  
Ash  
tinto/stained moka



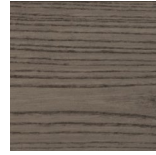
FRASSINO  
Ash  
tinto/stained  
canaletta walnut



FRASSINO  
Ash  
tinto/stained wengé

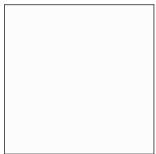


FRASSINO  
Ash  
tinto/stained canapa

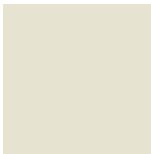


FRASSINO  
Ash  
tinto/stained caffè

## Laccato opaco poro aperto | Matt Lacquered open pore



BIANCO  
White  
(RAL 9016)



AVORIO  
Ivory  
(RAL 1013)



ARGILLA  
Argilla  
(RAL 7006)



PIOMBO  
Piombo  
(NCS S5005G20Y)



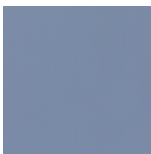
NERO  
Black  
(RAL 9005)



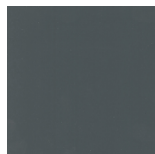
GRANATA  
Granata  
(NCS S4050Y90R)



PISTACCHIO  
Pistacchio  
(PANTONE 5825)



AVIO  
Avio  
(PANTONE 5415)

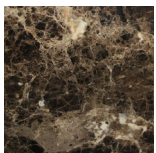


IRON  
Iron  
(RAL 7011)

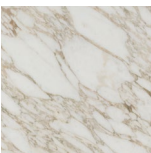


CIOCCOLATO  
Chocolate  
(RAL 8019)

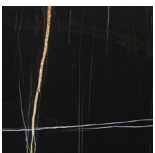
## Marmo | Marble



Emperador Dark



Calacatta Oro



Sahara Noir

# SCRIPT 60

TAVOLINO | SIDE TABLE

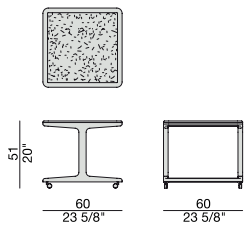
Tavolino su ruote con struttura in massello di frassino, piano inferiore in marmo e piano superiore in cristallo fumé temperato con bordo a becco di civetta (spessore mm. 10).

Side table on castors with base in solid ash, lower top in marble and upper top in tempered smoked glass with rounded edges (thickness mm. 10).

Beistelltisch auf Rädern mit Gestell aus massiver Esche, Unterplatte aus Marmor und Oberplatte aus ESG-Rauchglas mit abgerundeten Kanten (Stärke mm. 10).

Guéridon avec structure en frêne massif, plateau inférieur en marbre et plateau supérieur en verre trempé fumé avec angles arrondis (épaisseur mm.10).

Mesa auxiliar con ruedas con estructura de fresno macizo, tapa inferior de mármol y tapa superior de cristal templado ahumado con borde redondeado (espesor mm. 10).



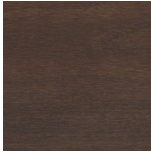
# SCRIPT 60

TAVOLINO | SIDE TABLE

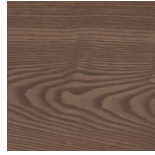
## Essenze | Wood



FRASSINO NATURALE  
Natural Ash



FRASSINO  
Ash  
tinto/stained moka



FRASSINO  
Ash  
tinto/stained  
canaletta walnut



FRASSINO  
Ash  
tinto/stained wengé

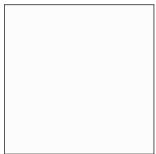


FRASSINO  
Ash  
tinto/stained canapa

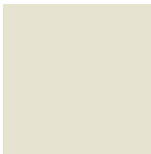


FRASSINO  
Ash  
tinto/stained caffè

## Laccato opaco poro aperto | Matt Lacquered open pore



BIANCO  
White  
(RAL 9016)



AVORIO  
Ivory  
(RAL 1013)



ARGILLA  
Argilla  
(RAL 7006)



PIOMBO  
Piombo  
(NCS S5005G20Y)



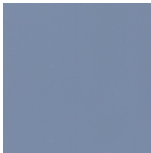
NERO  
Black  
(RAL 9005)



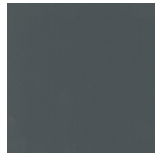
GRANATA  
Granata  
(NCS S4050Y90R)



PISTACCHIO  
Pistacchio  
(PANTONE 5825)



AVIO  
Avio  
(PANTONE 5415)

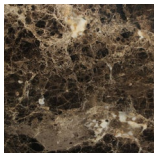


IRON  
Iron  
(RAL 7011)

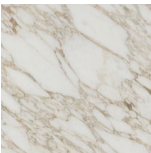


CIOCCOLATO  
Chocolate  
(RAL 8019)

## Marmo | Marble



Emperador Dark



Calacatta Oro



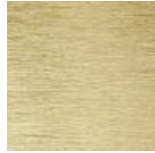
Sahara Noir

## Cristallo | Glass



FUMÉ  
Smoked

## Metallo | Metal



OTTONE SPAZZOLATO  
Brushed brass



# SCRIPT 150

TAVOLINO | COFFEE TABLE

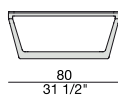
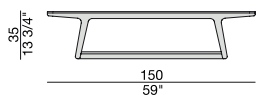
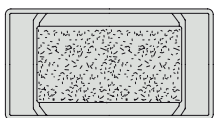
Tavolino da salotto con struttura in massello di frassino, piano inferiore in marmo e piano superiore in cristallo fumé temperato con bordo a becco di civetta (spessore mm. 10).

Coffee table with frame in solid ash, lower top in marble and upper top in tempered smoked glass with rounded edges (thickness mm. 10).

Couchtisch mit Gestell aus massiver Esche, Unterplatte aus Marmor und Oberplatte aus ESG-Rauchglas mit abgerundeten Kanten (Stärke 10 mm).

Table basse avec structure en frêne massif, plateau inférieur en marbre et plateau supérieur en verre trempé fumé avec angles arrondis (épaisseur mm.10).

Mesa de centro con estructura de fresno macizo, tapa inferior de mármol y tapa superior de cristal templado ahumado con borde redondeado (espesor mm.10).



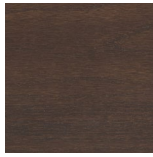
# SCRIPT 150

TAVOLINO | COFFEE TABLE

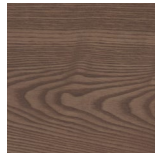
## Essenze | Wood



FRASSINO NATURALE  
Natural Ash



FRASSINO  
Ash  
tinto/stained moka



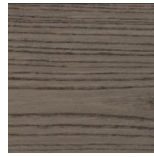
FRASSINO  
Ash  
tinto/stained  
canaletta walnut



FRASSINO  
Ash  
tinto/stained wengé

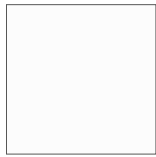


FRASSINO  
Ash  
tinto/stained canapa



FRASSINO  
Ash  
tinto/stained caffè

## Laccato opaco poro aperto | Matt Lacquered open pore



BIANCO  
White  
(RAL 9016)



AVORIO  
Ivory  
(RAL 1013)



ARGILLA  
Argilla  
(RAL 7006)



PIOMBO  
Piombo  
(NCS S5005G20Y)



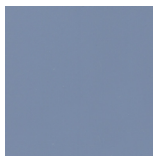
NERO  
Black  
(RAL 9005)



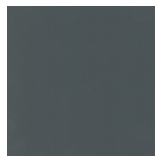
GRANATA  
Granata  
(NCS S4050Y90R)



PISTACCHIO  
Pistacchio  
(PANTONE 5825)



AVIO  
Avio  
(PANTONE 5415)

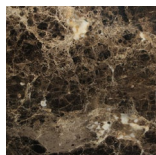


IRON  
Iron  
(RAL 7011)

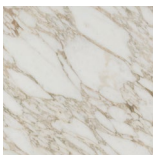


CIOCCOLATO  
Chocolate  
(RAL 8019)

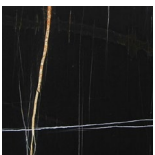
## Marmo | Marble



Emperador Dark



Calacatta Oro



Sahara Noir

## Cristallo | Glass



FUMÉ  
Smoked