

# QUADRIFOGLIO CRYSTAL TONDO 1

Design C. Ballabio

TAVOLO | TABLE

2018

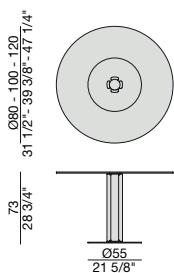
Tavolo da pranzo tondo con gamba centrale in massello di frassino montata su un anello di metallo in finitura Bronzoro. Piano in cristallo trasparente (spessore mm. 15) con piastra elettrosaldata in ottone spazzolato.

Round dining table with one central solid ash leg mounted on a metal ring in Bronzoro finish. Clear glass top (thickness mm. 15) with UV-glued brushed brass plate.

Runder Esstisch mit zentralem Bein aus massivem Eschenholz, befestigt auf einem Metallring mit Bronzoro Finish. Transparente Glastischplatte (15mm) mit elektrisch geschweisster Platte aus gebürstetem Messing.

Table à manger ronde avec pied central en frêne massif fixé sur un anneau en métal en finition Bronzoro. Plateau en verre transparent (épaisseur mm. 15) avec plaque en cuivre brossé soudé.

Mesa de comedor redonda con una pata central de fresno macizo montada sobre de un anillo de metal en acabado Bronzoro. Tapa de cristal transparente (espesor mm. 15) con placa pegada con UV en latón cepillado.



# QUADRIFOGLIO CRYSTAL TONDO 1

Design C. Ballabio

TAVOLO | TABLE

2018

## Essenze | Wood



FRASSINO NATURALE  
Natural Ash



FRASSINO  
Ash  
tinto/stained moka



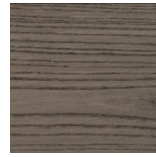
FRASSINO  
Ash  
tinto/stained  
canaletta walnut



FRASSINO  
Ash  
tinto/stained wengé



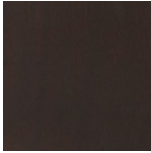
FRASSINO  
Ash  
tinto/stained canapa



FRASSINO  
Ash  
tinto/stained caffè



NOCE CANALETTA  
Canaletta Walnut

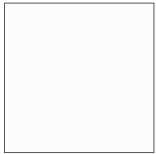


NOCE CANALETTA  
Canaletta Walnut  
tinto/stained moka

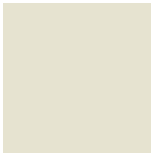


NOCE CANALETTA  
Canaletta Walnut  
tinto/stained wengé

## Laccato opaco poro aperto/chiuso | Matt Lacquered open/closed pore



BLANCO  
White  
(RAL 9016)



AVORIO  
Ivory  
(RAL 1013)



ARGILLA  
Argilla  
(RAL 7006)



PIOMBO  
Piombo  
(NCS S5005G20Y)



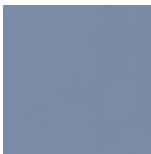
NERO  
Black  
(RAL 9005)



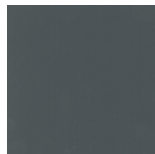
GRANATA  
Granata  
(NCS S4050Y90R)



PISTACCHIO  
Pistacchio  
(PANTONE 5825)



AVIO  
Avio  
(PANTONE 5415)



IRON  
Iron  
(RAL 7011)



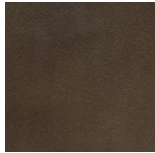
CIOCCOLATO  
Chocolate  
(RAL 8019)

## Cristallo | Glass



TRASPARENTE  
Transparent

## Metallo | Metal



BRONZORO

# QUADRIFOGLIO CRYSTAL TONDO 3

Design C. Ballabio

TAVOLO | TABLE

2018

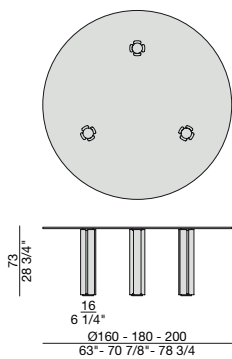
Tavolo da pranzo tondo con tre gambe in massello di frassino e piano in cristallo trasparente (spessore mm. 15) con piastre elettrosaldate. Piastre e piedini in ottone spazzolato.

Round dining table with three solid ash legs. Clear glass top (thickness mm. 15) with UV-glued plates. Brushed brass plates and feet.

Runder Esstisch mit drei Beinen aus massivem Eschenholz und transparenter Glastischplatte (15mm) mit elektrisch geschweisster Metallplatten. Platten und Füße aus gebürstetem Messing.

Table à manger ronde avec jambes en frêne massif et plateau en verre transparent (épaisseur mm. 15) avec plaques soudé. Plaques et pieds en cuivre brossé.

Mesa de comedor redonda con tres patas de fresno macizo. Tapa de cristal transparente (espesor mm. 15) con placas pegadas con UV. Placas y pies de latón cepillado.



# QUADRIFOGLIO CRYSTAL TONDO 3

Design C. Ballabio

TAVOLO | TABLE

2018

## Essenze | Wood



FRASSINO NATURALE  
Natural Ash



FRASSINO  
Ash  
tinto/stained moka



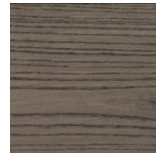
FRASSINO  
Ash  
tinto/stained  
canaletta walnut



FRASSINO  
Ash  
tinto/stained wengé



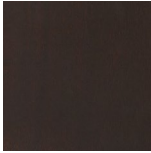
FRASSINO  
Ash  
tinto/stained canapa



FRASSINO  
Ash  
tinto/stained caffè



NOCE CANALETTA  
Canaletta Walnut

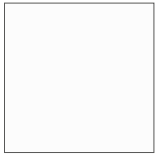


NOCE CANALETTA  
Canaletta Walnut  
tinto/stained moka

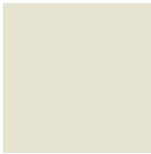


NOCE CANALETTA  
Canaletta Walnut  
tinto/stained wengé

## Laccato opaco poro aperto/chiuso | Matt Lacquered open/closed pore



BLANCO  
White  
(RAL 9016)



AVORIO  
Ivory  
(RAL 1013)



ARGILLA  
Argilla  
(RAL 7006)



PIOMBO  
Piombo  
(NCS S5005G20Y)



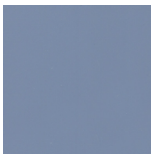
NERO  
Black  
(RAL 9005)



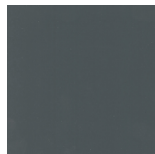
GRANATA  
Granata  
(NCS S4050Y90R)



PISTACCHIO  
Pistacchio  
(PANTONE 5825)



AVIO  
Avio  
(PANTONE 5415)



IRON  
Iron  
(RAL 7011)



CIOCCOLATO  
Chocolate  
(RAL 8019)

## Cristallo | Glass



TRASPARENTE  
Transparent

## Metallo | Metal



OTTONE SPAZZOLATO  
Brushed brass