

ASTON TV

Design: STC Studio



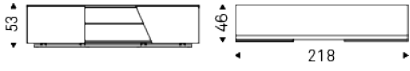
Product description

TV cabinet in titanium (GF11) or black (GF73) embossed lacquered wood. Titanium (GFM11) or black (GFM73) embossed steel base. Left door covered and quilted in synthetic leather or soft leather as per sample card with titanium (GFM11) embossed aluminum profiles. Right door in Canaletto walnut (NC), burned oak (RB) or Brushed Bronze with black chrome (06) details. Internal fumé glass shelves.

ASTON TV

Design: STC Studio

Dimension



ASTON TV

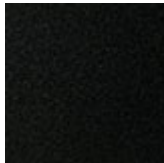
Design: STC Studio

Finishes: frame

wood



GF11 titanium
embossed



GF73 embossed
black

Finishes: 1 door

soft leather



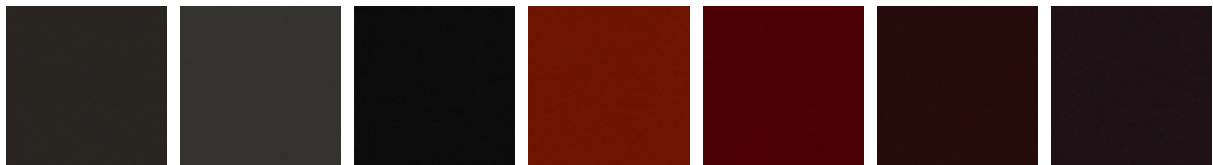
971 BIANCO 961 LATTE 967 AVORIO 947 OYSTER 948 LINO 950 TORTORA 945 SAFARI



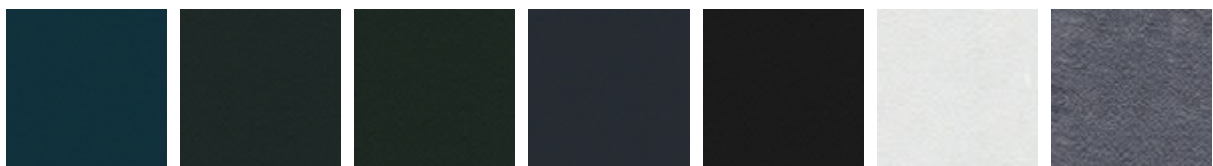
981 BISCOTTO 982 COGNAC 988 TABACCO 891 TESTA DI MORO 943 MOKA 993 ARTICO 959 ICE



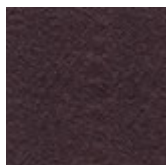
949 CENERE 951 CASTORO 983 ARGILLA 960 BRUNO 942 FANGO 946 MARRONE 952 SMOKE



953 ARDESIA 977 PIOMBO 973 NERO 992 LOBSTER 989 ROSSO CORSA 944 BORDEAUX 955 MORA



974 CAPRI 980 OTTANIO 987 SHERWOOD 940 NAVY 956 ATLANTICO PL71 BIANCO PERLATO LUCIDO PL73 NERO PERLATO LUCIDO



984 BRONZO

wood

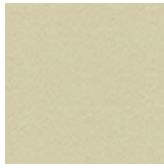


brushed bronze NC walnut canaletto RB burned oak

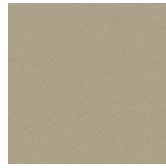
synthetic leather



ECP01 BIANCO



ECP03 PANNA



ECP47 OYSTER



ECP48 LINO



ECP25 CANAPA



ECP05 TORTORA



ECP36 CEMENTO



ECP23 LONDON



ECP26 FANGO



ECP83 ARGILLA



ECP07
MARRONE



ECP37 ARDESIA



ECP30 PIOMBO



ECP24 NERO



ECP28
KALAMATA



ECP27 FOSSIL



ECP08 MOKA



ECP13 ROSSO
CORSA



ECP14
BORDEAUX



ECP22 NAVY