





# ALAN TONDO 3 GAMBE

Design G. & O. Buratti

TAVOLO | DINING TABLE

2020

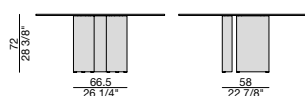
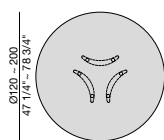
Tavolo da pranzo con base costituita da tre elementi a mezzaluna singoli in noce canaletta e piano in cristallo trasparente (spessore 15 mm), in legno (spessore 40 mm), in marmo (spessore 20 mm) o in Rock (spessore 6 mm). Puntali in metallo finitura cromo nero.

Dining table with base made up of three half-moon single elements in canaletta walnut and top in transparent glass (thickness 15 mm), in wood (thickness 40 mm), in marble (thickness 20 mm) or in Rock (thickness 6 mm). Metal end-feet in black chrome finish.

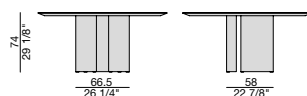
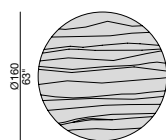
Esstisch mit Sockel aus drei einzelnen Halbmondelementen aus Nussbaum Canaletta. Die Tischplatte ist aus transparenten Glas (15mm) aus Holz (40mm), aus Marmor (20mm) oder aus Feinstein (Rock, 6mm). Die Fußenden sind aus Metall, Ausf. Schwarz-chrom.

Table de repas avec piétement composé par trois éléments individuels à demi-lune en noyer canaletta et plateau en verre transparent (épaisseur 15 mm), en bois (épaisseur 40 mm), en marbre (épaisseur 20 mm) ou en Rock (épaisseur 6 mm). Pieds en métal en finition chromé noir.

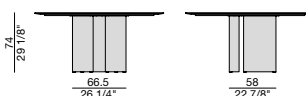
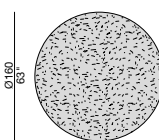
Mesa de comedor con base formada por tres elementos individuales en forma de media luna en nogal canaletta. Tapa en cristal transparente (espesor 15 mm), en madera (espesor 40 mm), en mármol (espesor 20 mm) o en Rock (espesor 6 mm). Pies acabados en metal cromo negro.



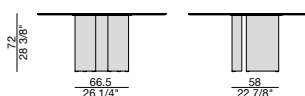
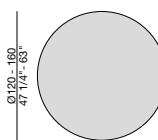
ALAN TONDO 3 GAMBE C



ALAN TONDO 3 GAMBE L



ALAN TONDO 3 GAMBE M



ALAN TONDO 3 GAMBE ROCK

# ALAN TONDO 4 GAMBE

Design G. & O. Buratti

TAVOLO | DINING TABLE

2020

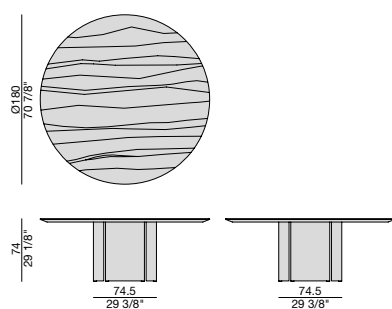
Tavolo da pranzo con base costituita da tre elementi a mezzaluna singoli in noce canaletta e piano in legno (spessore 40 mm) o in marmo (spessore 20 mm). Puntali in metallo finitura cromo nero.

Dining table with base made up of three half-moon single elements in canaletta walnut and top in wood (thickness 40 mm) or in marble (thickness 20 mm). Metal end-feet in black chrome finish.

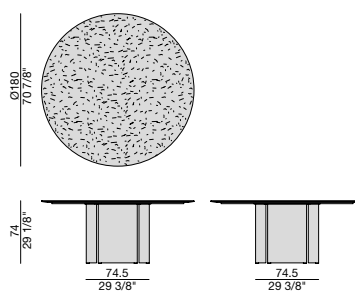
Esstisch mit Sockel aus drei einzelnen Halbmondelementen aus Nussbaum Canaletta. Die Tischplatte ist aus Holz (40mm) oder Marmor (20mm). Die Fußenden sind aus Metall, Ausf. Schwarz-chrom.

Table de repas avec piétement composé par trois éléments individuels à demi-lune en noyer canaletta et plateau en bois (épaisseur 40 mm) ou en marbre (épaisseur 20 mm). Pieds en métal en finition chromé noir.

Mesa de comedor con base formada por tres elementos individuales en forma de media luna en nogal canaletta. Tapa en madera (espesor 40 mm) o en mármol (espesor 20 mm). Pies acabados en metal cromo negro.



ALAN TONDO 3 GAMBE L



ALAN TONDO 3 GAMBE M

# ALAN TONDO 6 GAMBE

Design G. & O. Buratti

TAVOLO | DINING TABLE

2020

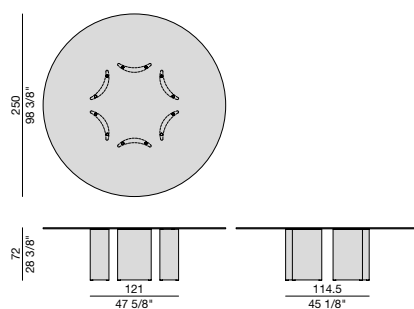
Tavolo da pranzo con base costituita da sei elementi a mezzaluna singoli in noce canaletta e piano in cristallo trasparente (spessore 15 mm). Puntali in metallo finitura cromo nero.

Dining table with base made up of six half-moon single elements in canaletta walnut and top in transparent glass (thickness 15 mm). Metal end-feet in black chrome finish.

Esstisch mit Sockel aus sechs einzelnen Halbmondelementen aus Nussbaum Canaletta. Die Tischplatte ist aus transparenten Glas (15mm). Die Fußenden sind aus Metall, Ausf. Schwarz-chrom.

Table de repas avec piétement composé par six éléments individuels à demi-lune en noyer canaletta et plateau en verre transparent (épaisseur 15 mm). Pieds en métal en finition chromé noir.

Mesa de comedor con base formada por seis elementos individuales en forma de media luna en nogal canaletta. Tapa en cristal transparente (espesor 15 mm). Pies acabados en metal cromo negro



ALAN TONDO 6 GAMBE C

# ALAN BOTTE 4 GAMBE

Design G. & O. Buratti

TAVOLO | DINING TABLE

2020

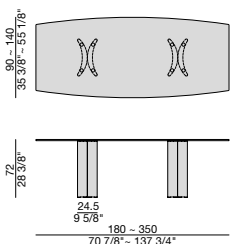
Tavolo da pranzo con base costituita da tre elementi a mezzaluna singoli in noce canaletta e piano in cristallo trasparente (spessore 15 mm), in legno (spessore 40 mm), in marmo (spessore 20 mm) o in Rock (spessore 6 mm).  
Puntali in metallo finitura cromo nero.

Dining table with base made up of three half-moon single elements in canaletta walnut and top in transparent glass (thickness 15 mm), in wood (thickness 40 mm), in marble (thickness 20 mm) or in Rock (thickness 6 mm). Metal end-feet in black chrome finish.

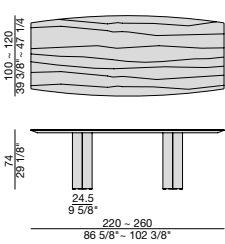
Esstisch mit Sockel aus drei einzelnen Halbmondelementen aus Nussbaum Canaletta. Die Tischplatte ist aus transparenten Glas (15mm) aus Holz (40mm), aus Marmor (20mm) oder aus Feinstein (Rock, 6mm). Die Fußenden sind aus Metall, Ausf. Schwarz-chrom.

Table de repas avec piétement composé par trois éléments individuels à demi-lune en noyer canaletta et plateau en verre transparent (épaisseur 15 mm), en bois (épaisseur 40 mm), en marbre (épaisseur 20 mm) ou en Rock (épaisseur 6 mm). Pieds en métal en finition chromé noir.

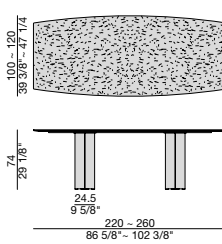
Mesa de comedor con base formada por tres elementos individuales en forma de media luna en nogal canaletta. Tapa en cristal transparente (espesor 15 mm), en madera (espesor 40 mm), en mármol (espesor 20 mm) o en Rock (espesor 6 mm). Pies acabados en metal cromo negro.



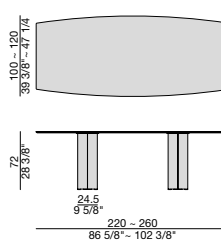
ALAN BOTTE 4 GAMBE C



ALAN BOTTE 4 GAMBE L



ALAN BOTTE 4 GAMBE M



ALAN BOTTE 4 GAMBE ROCK

# ALAN RETTANGOLARE 4 GAMBE

Design G. & O. Buratti

TAVOLO | DINING TABLE

2020

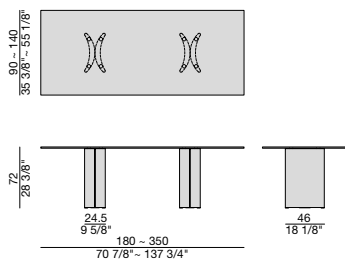
Tavolo da pranzo con base costituita da tre elementi a mezzaluna singoli in noce canaletta e piano in cristallo trasparente (spessore 15 mm o in Rock (spessore 6 mm).  
Puntali in metallo finitura cromo nero.

Dining table with base made up of three half-moon single elements in canaletta walnut and top in transparent glass (thickness 15 mm) or in Rock (thickness 6 mm). Metal end-feet in black chrome finish.

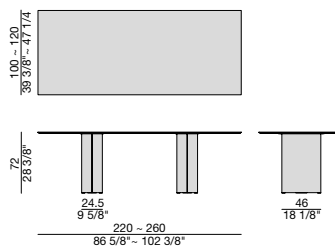
Esstisch mit Sockel aus drei einzelnen Halbmondelementen aus Nussbaum Canaletta. Die Tischplatte ist aus transparenten Glas (15mm) oder aus Feinstein (Rock, 6mm).  
Die Fußenden sind aus Metall, Ausf. Schwarz-chrom.

Table de repas avec piétement composé par trois éléments individuels à demi-lune en noyer canaletta et plateau en verre transparent (épaisseur 15 mm) ou en Rock (épaisseur 6 mm). Pieds en métal en finition chromé noir.

Mesa de comedor con base formada por tres elementos individuales en forma de media luna en nogal canaletta. Tapa en cristal transparente (espesor 15 mm) o en Rock (espesor 6 mm). Pies acabados en metal cromo negro.

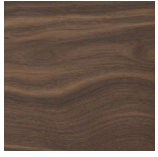


ALAN BOTTE 4 GAMBE C

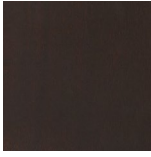


ALAN BOTTE 4 GAMBE ROCK

## Essenze | Wood



NOCE CANALETTA  
Canaletta Walnut

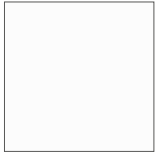


NOCE CANALETTA  
Canaletta Walnut  
tinto/stained moka



NOCE CANALETTA  
Canaletta Walnut  
tinto/stained wengé

## Laccato opaco poro chiuso | Matt Lacquered closed pore



BIANCO  
White  
(RAL 9016)



AVORIO  
Ivory  
(RAL 1013)



ARGILLA  
Argilla  
(RAL 7006)



PIOMBO  
Piombo  
(NCS S5005G20Y)



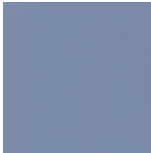
NERO  
Black  
(RAL 9005)



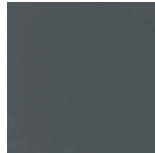
GRANATA  
Granata  
(NCS S4050Y90R)



PISTACCHIO  
Pistacchio  
(PANTONE 5825)



AVIO  
Avio  
(PANTONE 5415)

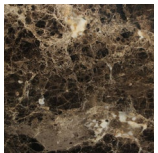


IRON  
Iron  
(RAL 7011)

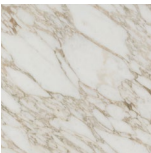


CIOCCOLATO  
Chocolate  
(RAL 8019)

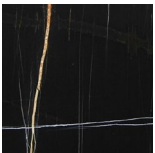
## Marmo | Marble



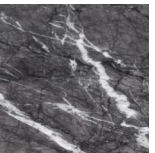
Emperador Dark



Calacatta Oro

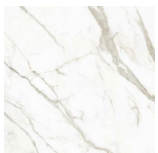


Sahara Noir

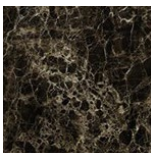


Grigio Carnico

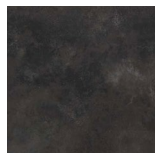
## Rock | Rock



CALACATTA  
Calacatta

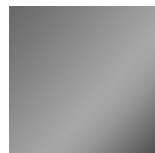


EMPERADOR  
Emperador



BLACK OXIDE  
Black Oxide

## Metallo | Metal



CROMO NERO  
Black Chromed