

YODA Argile

Design: Paolo Cattelan



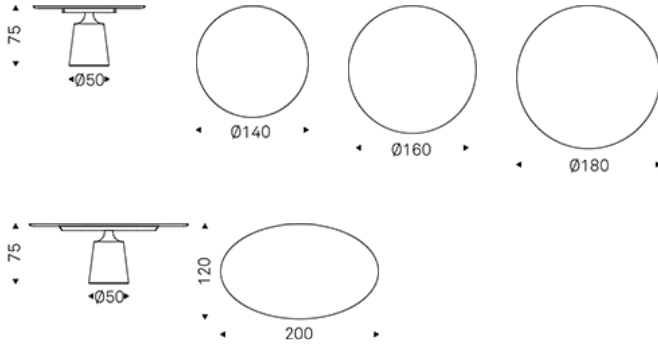
Product description

Table with base in bronze (GFM18), graphite (GFM69), pearl (GFM70), black (GFM73) embossed lacquered steel or satin titanium steel (11). Top in MDF clay-spatulated in colours Havana (AR04), Cairo (AR05) or Oslo (AR09).

YODA Argile

Design: Paolo Cattelan

Dimension



YODA Argile

Design: Paolo Cattelan

Finishes: base

metal



11 satin titanium

GFM18 bronze embossed

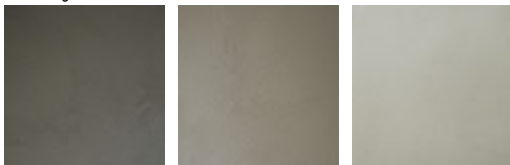
GFM69 graphite embossed

GFM70 pearl embossed

GFM73 black embossed

Finishes: top

Clay



AR04 Havana

AR05 Cairo

AR09 Oslo