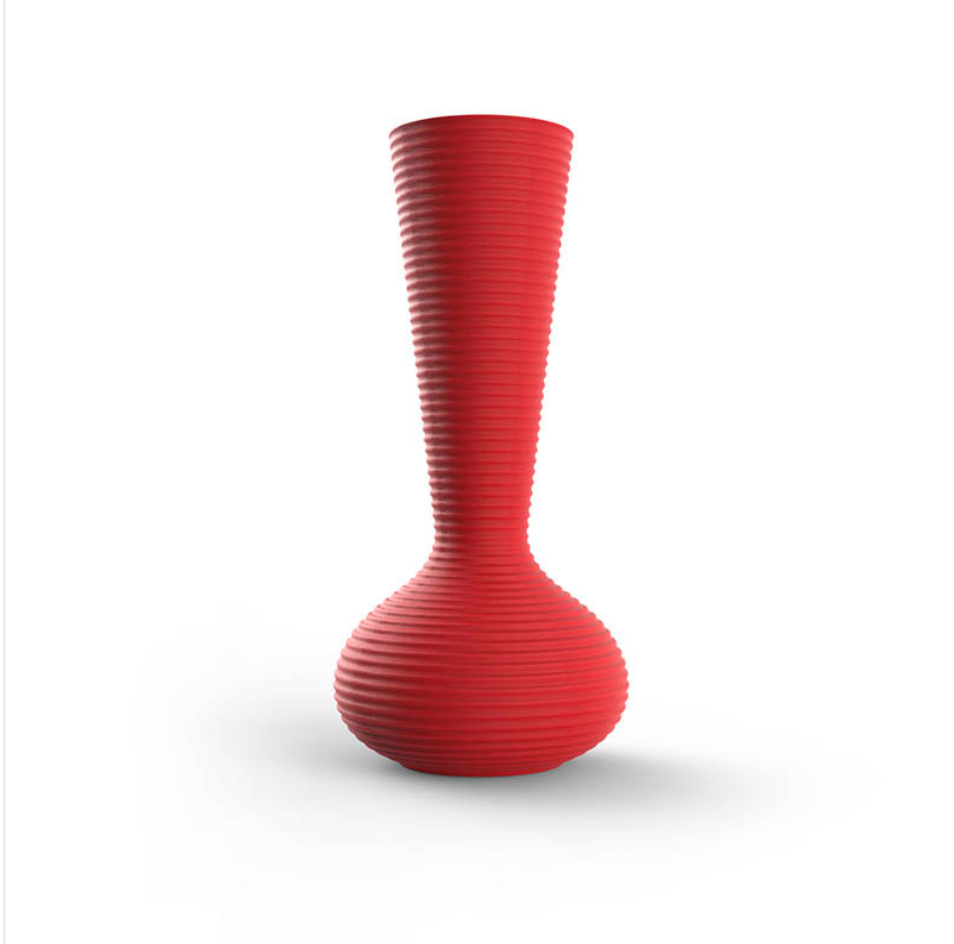


## Bloom planter

by Eugeni Quitllet

Bloom lamp–planter collection, designed by Eugeni Quitllet for Vondom.  
Metaphorically, this collection **captures the flowering stage found in nature.**

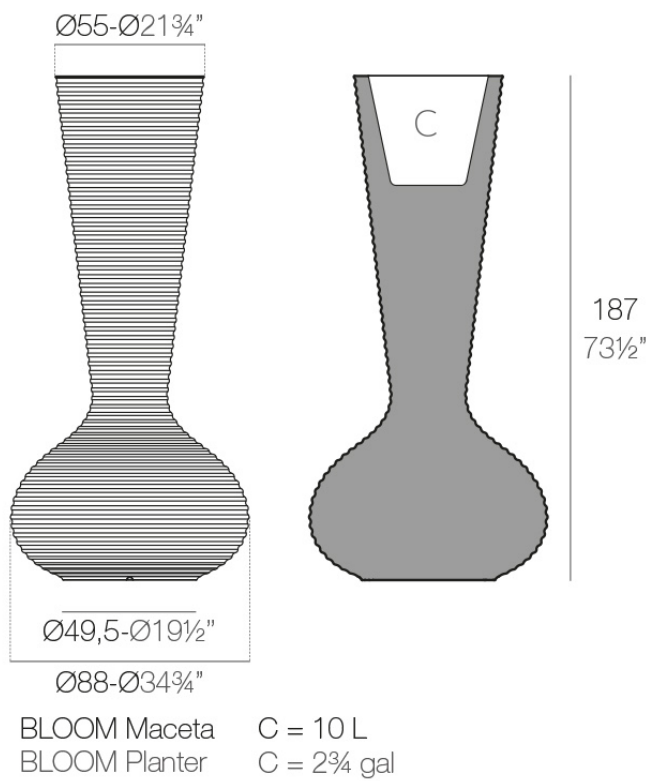


Info

Description

Made of polyethylene resin by rotational moulding. 100% Recyclable. Item suitable for indoor and outdoor use. Available in different finishes.

Weight: 35.06 Kg



Finishes

finishes

BASIC  
Ref. 65019A



ice



green



purjai red



orange



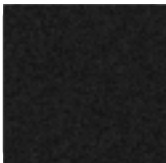
notte blue



crema



white



black



bronze



steel



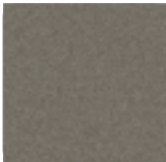
anthracite



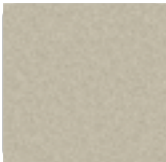
red



khaki



taupe



ecru



beige

Matt Polyethylene

SELF-WATERING  
Ref. 65019R



ice



green



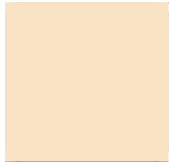
purjai red



orange



notte blue



crema



white



black



bronze



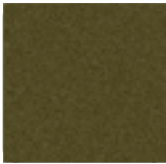
steel



anthracite



red



khaki



taupe



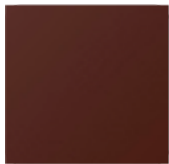
ecru



beige

Self-watering system included in all planters except those with basic finish

## LACQUERED Ref. 65019F



purjai red



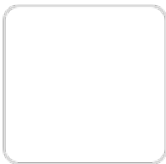
orange



notte blue



crema



white



black



bronze



steel



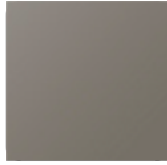
anthracite



red



khaki



taupe



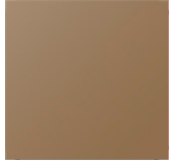
ecru



beige



modo green



champany

Lacquered Polyethylene

## lighting

---

WHITE LED  
Ref. 65019W



ice

White internally lit unit with LED technology. Available only in matte ice white finish.

RGBW LED  
Ref. 65019L



ice

Unit with internal lighting with RGBW LED technology and remote control unit for switching colors. Available only in matte ice white finish. Remote control included.

## RGBW LED DMX

Ref. 65019D



ice

Unit with internal lighting with RGBW LED technology and remote control unit for switching colors. Also controlled by DMX-1024 (wireless), enabling communication between one or more products simultaneously via the DMX transmitter (not included). There are two options to choose from: Professional XLR DMX and Home WIFI DMX. (Remote control included). Optional battery

## RGBW LED BATTERY

Ref. 65019Y



ice

Unit with internal lighting with battery-powered RGBW LED technology. Includes charger and remote control for switching colors and charger. Available only in matte ice white finish.

## RGBW LED DMX BATTERY

Ref. 65019DY



ice

Unit with internal lighting with RGBW LED technology and remote control unit for switching colors. Also controlled by DMX-1024 (wireless), enabling

communication between one or more products simultaneously via the DMX transmitter (not included). There are two options to choose from: Professional XLR DMX and Home WIFI DMX. (Remote control included).

## Ambients

---

