

## ZERMATT Wood

Design: Yasuhiro Shito



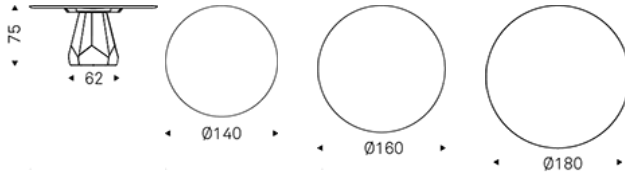
### Product description

Table with base in titanium (GFM11) or bronze (GFM18) embossed lacquered steel. Top in Canaletto walnut (NC) or burned oak (RB).

# ZERMATT Wood

Design: Yasuhiro Shito

## Dimension

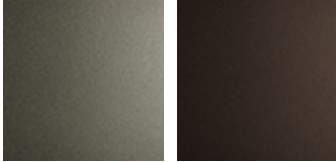


# ZERMATT Wood

Design: Yasuhiro Shito

Finishes: base

*metal*



GFM11 titanium  
embossed

GFM18 bronze  
embossed

Finishes: top

*wood*



NC walnut  
canaletto

RB burned oak