



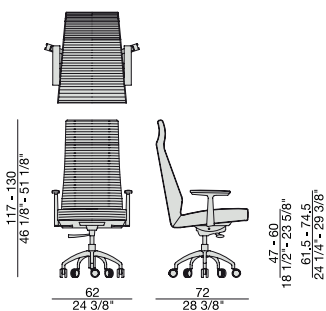
Poltrona direzionale girevole con base in metallo a 5 razze su ruote, braccioli in massello di noce canaletta e rivestimento nei tessuti della collezione. Possibilità di combinare diversi tessuti tra interno ed esterno. Il tessuto della parte frontale presenta sempre impuntura orizzontale.

Executive swiveling armchair with five stars feet on castors, armrests in solid canaletta walnut and cover in the fabrics of the collection. It is possible to combine different fabrics for inside and outside. The fabric used for the front part of the seat and the back always has the horizontal stitching.

Chef- drehbar Sessel mit 5-Speichen- Metallgestell, Armlehnen aus massivem Nussbaum Canaletta und Bezug in den Stoffen der Kollektion. Verschiedene Stoffkombination zwischen dem innen und außen-Bezug sind möglich. Der Stoff hat für die Sitzteile vorne und hinten immer horizontale Naht.

Fauteuil pivotante de direction avec base en métal, roues à cinq branches, bras en noyer canaletta massif et revêtement dans les tissus de la collection. Possibilité de combiner différents tissus entre la partie interne et externe. Le tissu utilisé pour la partie frontale de l'assise et du dossier a toujours la couture horizontale.

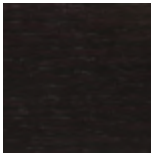
Silla de dirección giratoria con base en metal con ruedas, apoya brazos en nogal canaletta macizo y revestimiento en las telas de la colección. Es posible combinar diferentes telas entre interior y exterior. La tela utilizada en la parte frontal siempre tiene costura horizontal.



Esenze | Wood



Noce canaletta
Canaletta walnut



Noce canaletta
tinto moka
*Canaletta walnut
moka stained*



Noce canaletta
tinto wengè
*Canaletta walnut
wengè stained*

Metallo | Metal



Alluminio Lucido
Shiny Aluminum

Pelle | Leather

Cat. LUX



Nabuk

Cat. PLUS



Pelle PLUS

Cat. EXTRA



Pelle EXTRA

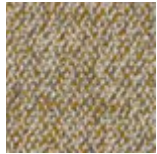
Cat. PELLE



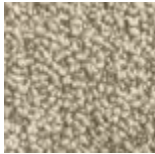
Pelle

Rivestimento | Cover

Cat. A



Twist



Zante

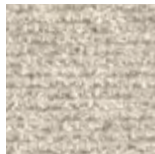
Cat. B



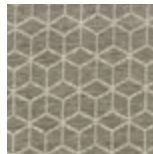
Bouclage



Motley



Tammy



Rabat

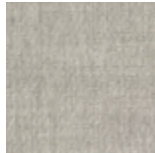
Cat. C



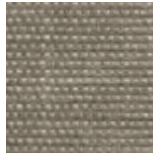
Armam



Ikat



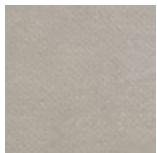
Lint



Loom



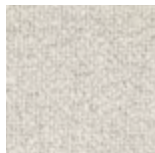
Madras



Moleskin



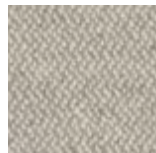
Moran



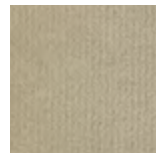
Patch



Silesia

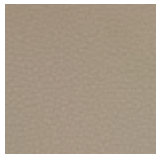


Serge



Velvet

Cat. D



Paros
eco leather



Range

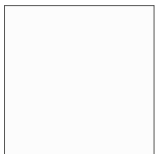


Tress

Cat. E



Dorian



In Bianco/Calico

Cat. COM

Disponibile con tessuto fornito dal cliente.

Available with fabric supplied by the customer.

Verfügbar mit Kundenstoff.

Disponibile avec tissu du client.

Disponibile con tela suministrada por el cliente.