

HARBOUR

Design: Paolo Cattelan



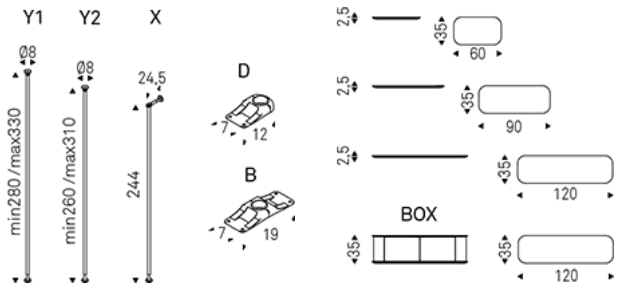
Product description

Modular wall- or ceiling-hanging bookcase. Pillars and brackets in titanium (GFM11) embossed lacquered steel with Oxygrey details or in bronze (GFM18) with Oxybrass details. Shelves and containers in Canaletto walnut (NC) with lower part in titanium (GF11) embossed lacquered wood or in burned oak (RB) with lower part in bronze (GF18) embossed lacquered wood and bronze glass sides.

HARBOUR

Design: Paolo Cattelan

Dimension

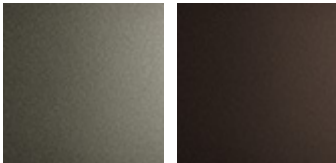


HARBOUR

Design: Paolo Cattelan

Finishes: frame

metal

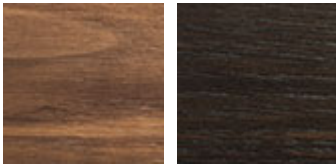


GFM11 titanium
embossed

GFM18 bronze
embossed

Finishes: box

wood

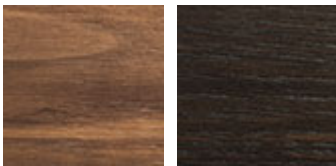


NC walnut
canaletto

RB burned oak

Finishes: shelves

wood



NC walnut
canaletto

RB burned oak