

Model Code F2067

date of issue 16-02-12 revision 00
 revision of 11-11-21 (the present replaces any previous versions)



Designer: centro studi interno

Structure: pinewood, multilayer and plywood covered with polyurethane foam.

Spring system: elastic webbing.

Seat Padding: ecological polyurethane foam covered with 100% polyester padding.

Back Padding: ecological polyurethane foam covered with 100% polyester padding.

Arm Interior: ecological polyurethane foam covered with 100% polyester padding.

Removability: not available.

Sewing: leather coverings feasible with contrast stitching in the colors available; cuts and sewing vary on microfiber (or fabric)coverings.

Mechanisms: the model is equipped with manual lift-up headrest. The height of the model with lifted headrests is 91 cm. The frame of version (143) rests on a swivel metal mechanism (base).

Standard feet: On swivel chair version (143) SWIVEL492 satinized metal base, h. 17 cm. On chair version (100) PM718 chromed metal base, h. 15.5 cm. Some versions may be equipped with hidden feet with a supporting structural function.

Density of seat and back kg/cbm (±5%) (1)

Markets	Seat	Back
I	30 Medium	30
D - NL - CH	30 hard	30 hard
USA - California	30 soft	30 soft
GB	30 fire retardant	30 fire retardant
Others	30 Medium	30

Note: when no values/contents are specified in the chart, please refer to 'Others' field/area.

(1)Density: volume mass apparently determined on materials without any kind of covers and according to the UNI EN ISO 845 regulations. Indicated values refer to production averages; the Company reserves the right, if needed, to make changes to the declared technical characteristics. Before use, it is advisable to look at the SAFETY INFORMATION TECHNIQUE for info regarding use and protection of people and of the environment, in compliance with existing EEC regulations.

Coverings

	suggested	not suggested	not possible
thick leathers	✓		
thin elastic leathers	✓		
natural leathers	✓		
fabric*			✓
microfibre*	✓		
leather + split			✓
DeLuxe	✓		
multi colour**			✓
multi-category**			
multi covering**			✓

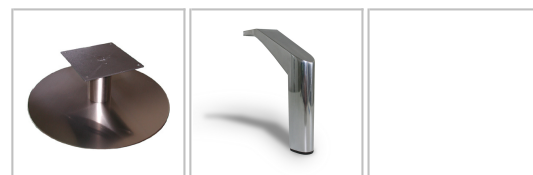
Please note: for not removable models, only one colour fabric covers are available.

* fabrics and microfibers are not available for the U.K. market

Components / Optional vers.



Feet



SWIVEL492

PM718



Ottoman



With the reservation of carrying for production purposes and without advanced notices modifications on the materials, coverings and dimensions of the product as indicated in the relevant specification. The given dimensions and volume are of indicative value being subject to the production process tolerances. For normal use, the following maximum loads are recommended: Armchairs max. 120 kg, 2-seat sofas max. 200 kg (2x100 kg), 3-seat sofas max. 240 kg (3x80 kg). Use with loads exceeding the indicated values may cause the sofa/armchair or its components to break.

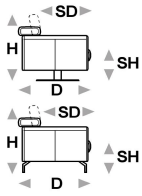


↑ fold following the dotted line ↑

joke.cal 848



L Length - H Height - D Depth - SH Seat Height - SD Seat Depth
Dimensions refer to maximum sizes of the version with closed mechanism (where available).



L 80
H74 D91 SH45 SD54

L 80
H74 D91 SH45 SD54

dimensions		
version code	100	143
Description	chair	swivel chair

↓ fold following the dotted line ↓

